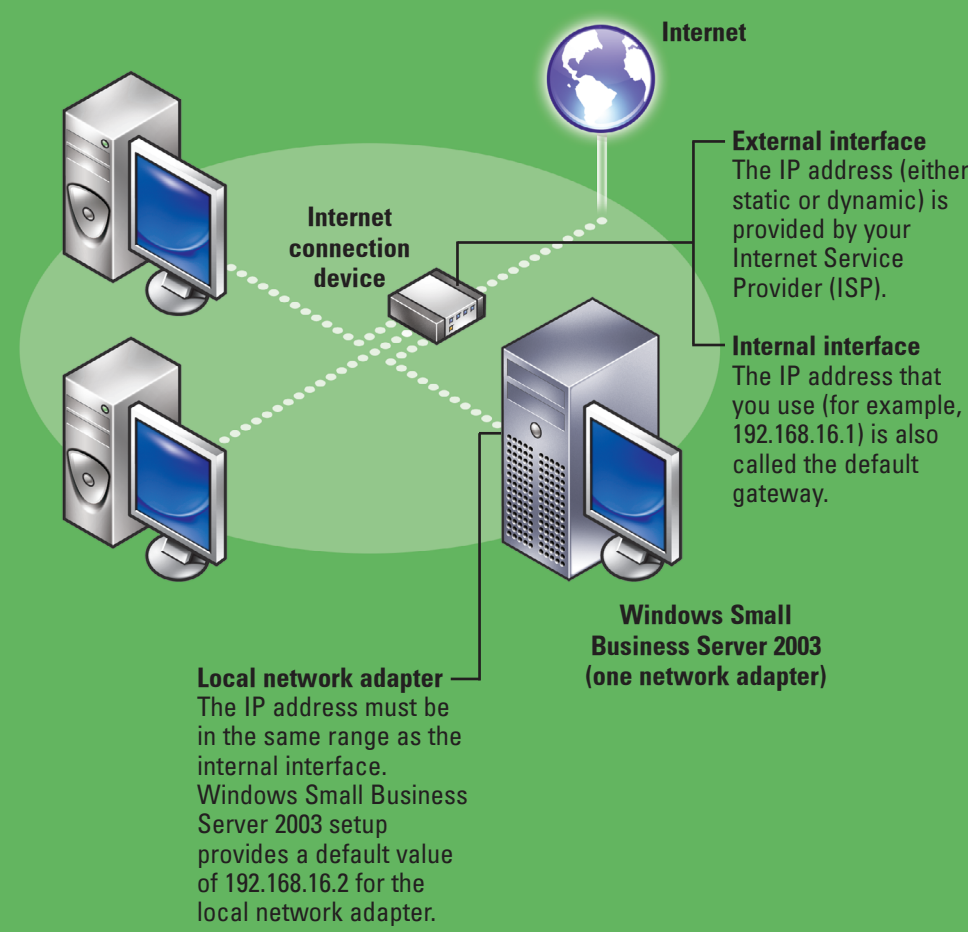


Microsoft®
Windows®
Small Business Server 2003



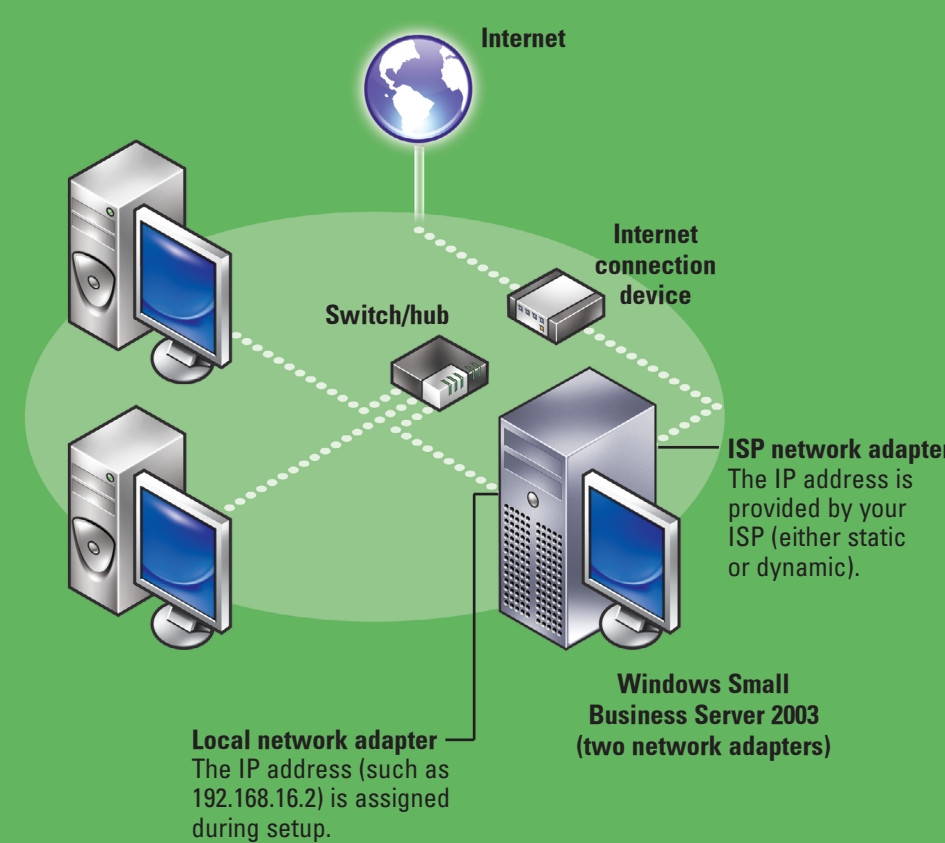
If you have a broadband connection and one network adapter

Plug the cable for your server's network adapter into the internal (local) interface of the Internet connection device.



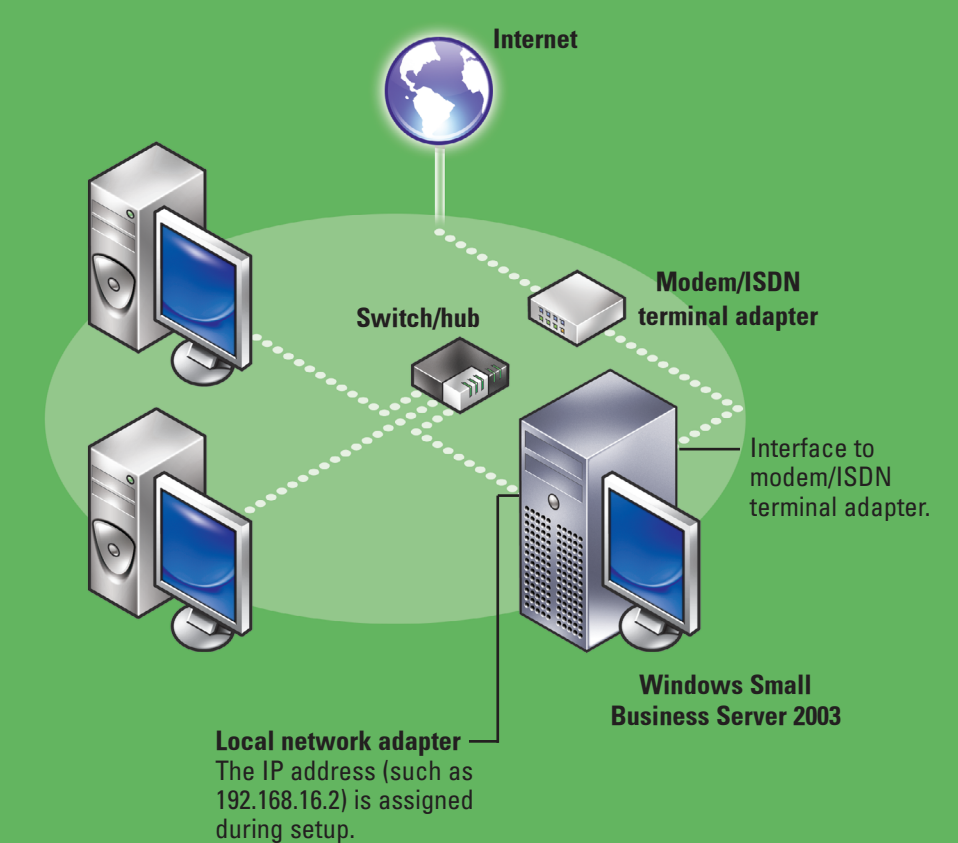
If you have a broadband connection and two network adapters

Plug one network adapter into the switch or hub to which your client computers will connect, and then plug the other network adapter into the broadband connection device.



If you have a dial-up connection

Plug the network adapter into the switch or hub to which your client computers will connect.



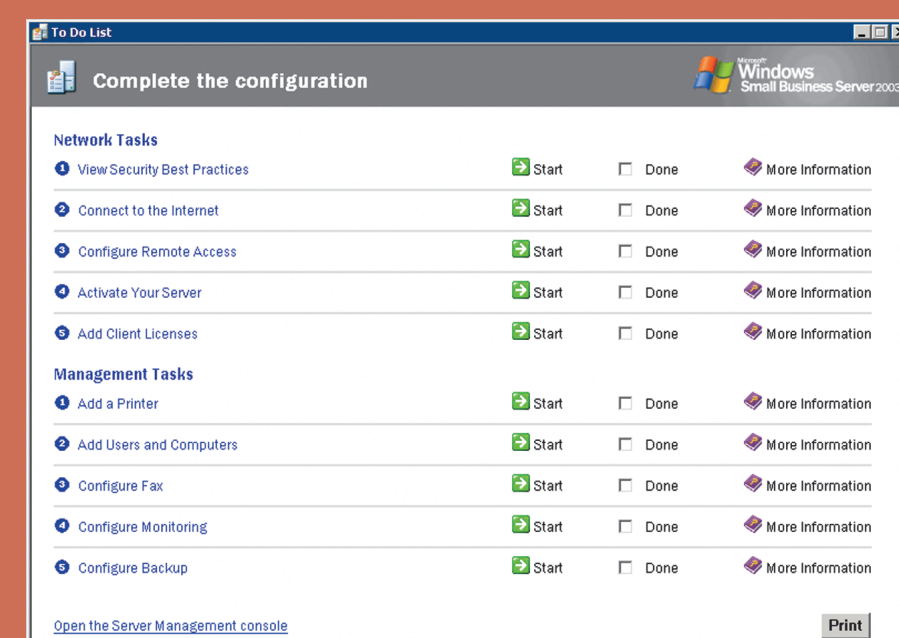
connecting...

Choose your network environment and ensure that all network cables are connected properly before you turn on the system.

Completing Setup

Before you turn on your system for the first time, set up your server as shown in the previous section, and then perform the following steps:

- 1 Turn on your system.
- 2 Follow the instructions on the screen to complete the setup. For detailed setup instructions, see the *Microsoft Windows Small Business Server 2003 Getting Started Guide* that shipped with your server.
- 3 If you have Premium Edition software applications, install them at this time.
- 4 If you have a *Windows Small Business Server 2003 R2 With SP2 Technologies CD*, install it at this time.
- 5 When the **To Do List** appears, perform the steps in the order listed to complete the setup.



configuring...

Important Configuration Information

- If your system has two network adapters, you will be prompted to specify which network adapter is connected to your local network during setup. When you reach the setup screen titled **Local Network Adapter Information**:
 - 1 Disconnect the network adapter that is connected to your Internet connection device. The status changes to *Disconnected*.
 - 2 Select the network adapter with the *Connected* status.
 - 3 Click **Next** to proceed with setup.
- If you have an Internet connection device that supports DHCP or you have another server on your network that is running the DHCP service, follow the instructions on the screen during setup to properly configure your DHCP settings. It is recommended that you use the DHCP service provided by Windows Small Business Server 2003.
- Windows Small Business Server 2003 must be installed as the single primary domain controller on the network. You are allowed to specify the domain name during setup, but you cannot change the domain name after the setup is completed.
- It is recommended that you connect your server running Windows Small Business Server 2003 to a local network before beginning setup so that the client computers that are on the network can be configured automatically during setup. However, if you want to complete setup without connecting to a local network, connect your server to a stand-alone hub or switch to ensure that setup completes successfully.
- To help keep your system secure, download any recommended patches, hotfixes, and service packs by visiting the **Downloads** for Windows Small Business Server 2003 website at <http://go.microsoft.com/fwlink/?LinkId=16918> or by clicking **Downloads and Updates** under the Information Center in the Server Management console for Windows Small Business Server 2003.

Installing the Small Business Server 2003 R2, Premium Edition Software Applications

If you purchased Small Business Server 2003 R2, Premium Edition, the following software applications are included on the *Microsoft Windows Small Business Server 2003 R2 With SP2 Premium Edition Premium Technologies CD* and the *Microsoft Office FrontPage 2003 CD*:

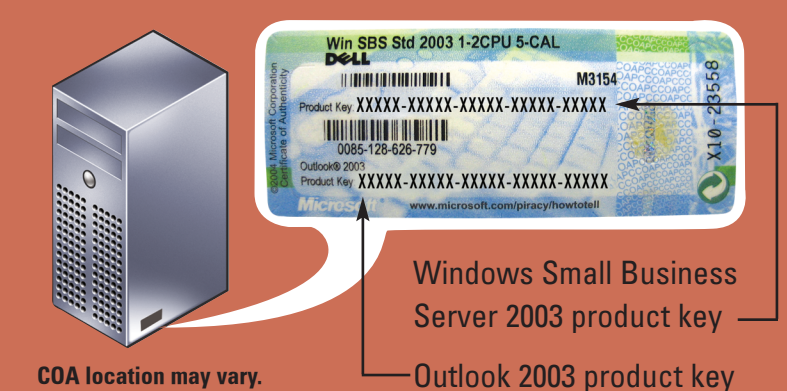
- Microsoft SQL Server 2005 WorkGroup Edition
- Microsoft Internet Security and Acceleration (ISA) Server 2004
- Microsoft FrontPage® 2003

For step-by-step instructions on installing these software applications, insert the *Premium Technologies CD* into your CD drive, and then click **How to Install**.

Application Product Keys

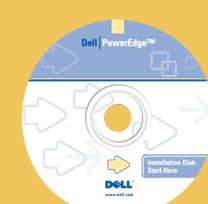
The Microsoft Windows operating system Certificate of Authenticity (COA), a multicolored label located on your system, contains two product keys for your Premium Edition applications.

- Use the Windows Small Business Server 2003 R2 operating system product key when installing SQL Server 2005.
- Use the Outlook 2003 product key when installing FrontPage 2003.



Getting Help

- The *Getting Started Guide* that shipped with your server contains general system features and hardware setup guidelines.
- To verify the version of the operating system installed, click **Start** → **Server Management** and view the top right-hand corner of the screen.
- For more information about the procedures described in this document, see the **Getting Help** section in the *Installation and Troubleshooting Guide* or the *Hardware Owner's Manual* that shipped with your server.
- Technical information, documentation for your system, and the latest file downloads are available from the Dell Support website at support.dell.com. For additional information, refer to www.dell.com/ostechsheets.
- The *Microsoft Windows Small Business Server 2003 R2 With SP2 Getting Started Guide* that shipped with your operating system kit provides information about completing the operating system installation procedure. It is also available on the Microsoft website at <http://go.microsoft.com/fwlink/?LinkId=63911>.
- Additional Microsoft documentation for Windows Small Business Server 2003 is available on the Microsoft website at <http://go.microsoft.com/fwlink/?LinkId=92482>.



To reinstall the operating system, use the *Dell PowerEdge™ Installation and Server Management CD*.

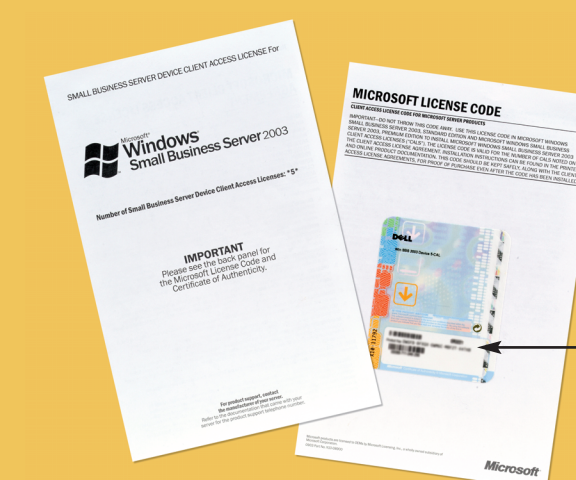
helpful info...

Client Access Licensing Requirements

Two types of Windows Small Business Server 2003 Client Access Licenses are available: device-based or user-based. You can either designate a license for every device (used by any user) that accesses your server, or designate a license for every named user who accesses your servers (from any device).

If you did not add client licenses from the **To Do List** or if you need to install additional licenses, click **Start** → **Server Management** → **Licensing** → **Add Licenses**. Follow the steps in the **Add Licenses** wizard.

If you have purchased additional Client Access Licenses from Dell, you must add them to the operating system. These additional licenses are packaged as illustrated in the diagram below.

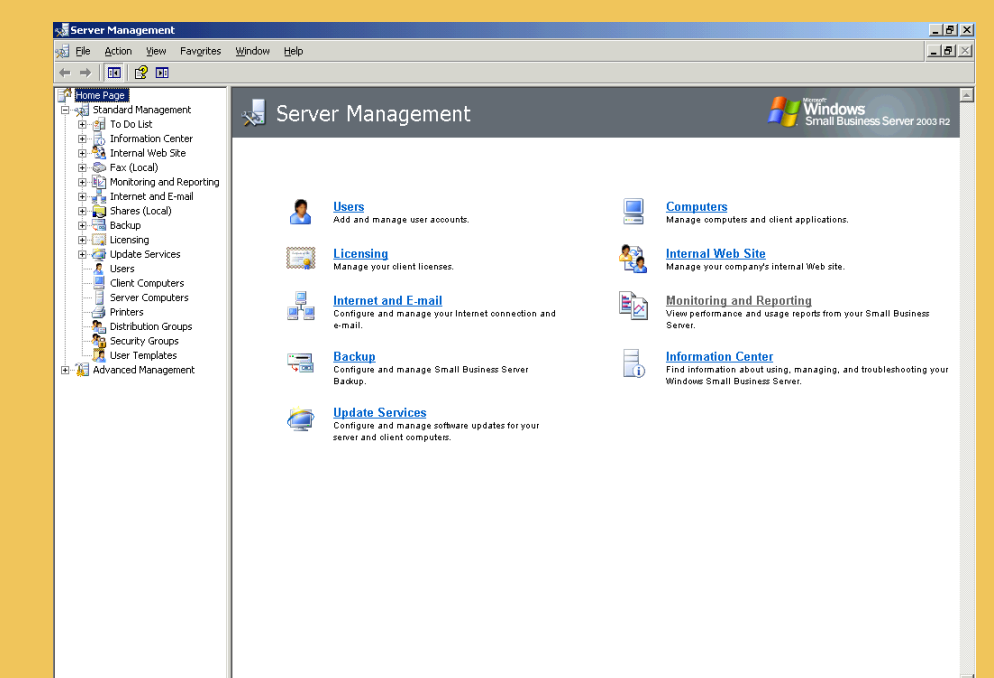


The product key is located on the back of the Windows Small Business Server 2003 license agreement. Ensure that you keep this code in a safe location.

Your Dell system with Windows Small Business Server 2003 comes pre-installed with five Client Access Licenses. If you need to purchase additional licenses, contact your Dell account representative.

Managing Windows Small Business Server 2003

Use the Server Management console for ongoing management of your server. To open the console, click **Start** → **Server Management**.



Information in this document is subject to change without notice.

© 2007 Dell Inc. All rights reserved.

Reproduction in any manner whatsoever without the written permission of Dell Inc. is strictly forbidden.

Dell, the DELL logo, OpenManage, and PowerEdge are trademarks of Dell Inc.; Microsoft, Windows, and FrontPage are either trademarks or registered trademarks of Microsoft Corporation in the United States and/or other countries.

Dell Inc. disclaims any proprietary interest in the marks and names of others.

July 2007

